

O n e c o m p a n y , o n e i n v o i c e , o n e p o i n t o f c o n t a c t

## How to install and configure the SAGEM XG-760N WIFI KEY under Windows 98, Me, 2000 or XP

**Do not plug the WiFi key into the computer yet.**

**Please start by installing the driver first, the software will invite you to plug the Wifi key later.  
(please install it **ONLY THEN**)**

STAGE 1 – Installation of the driver and plugging of the Sagem XG-760N wifi key

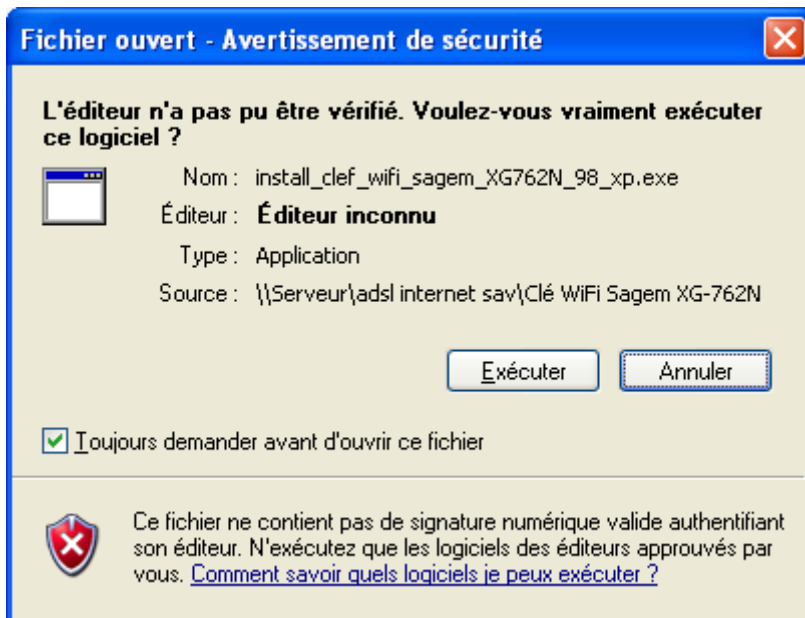
STAGE 2 – Configuration of the Sagem XG-760N wifi key

### STAGE 1 – Install the driver

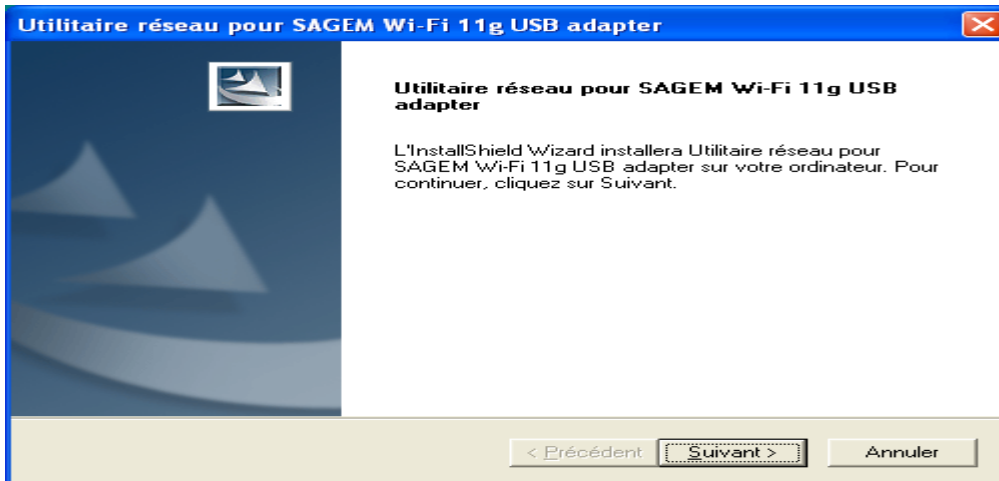
Insert the CDROM into the driver

Double click on the version concerning your computer

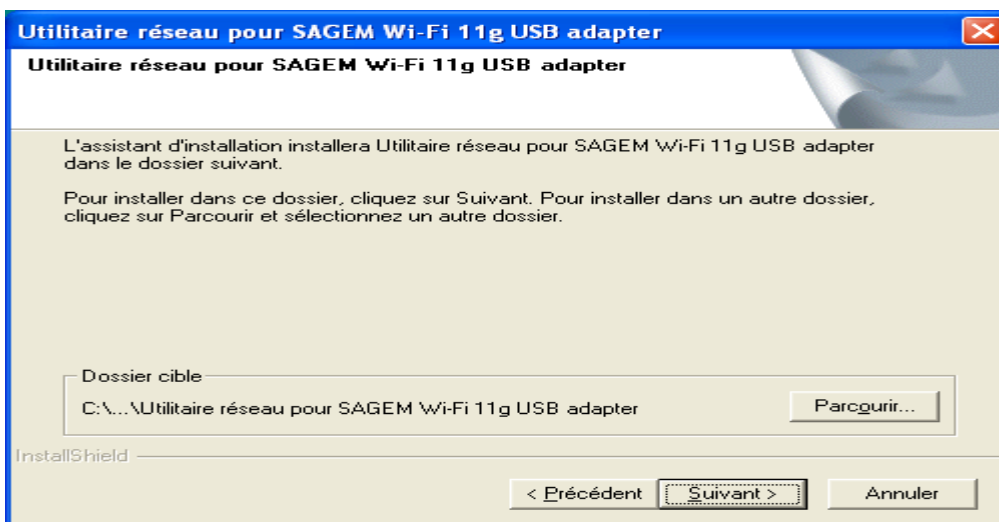
Click on **EXECUTER**



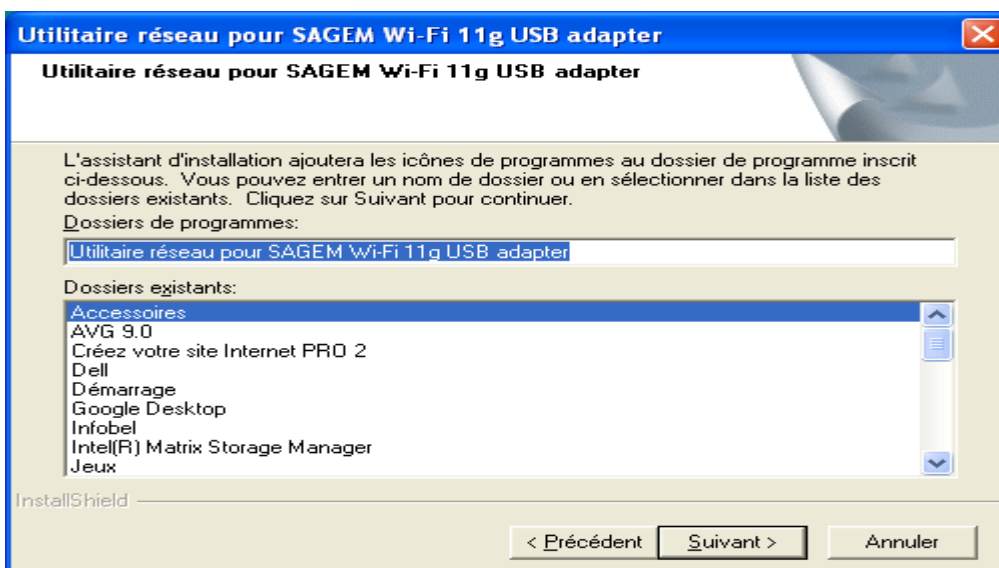
Click on SUIVANT (next)



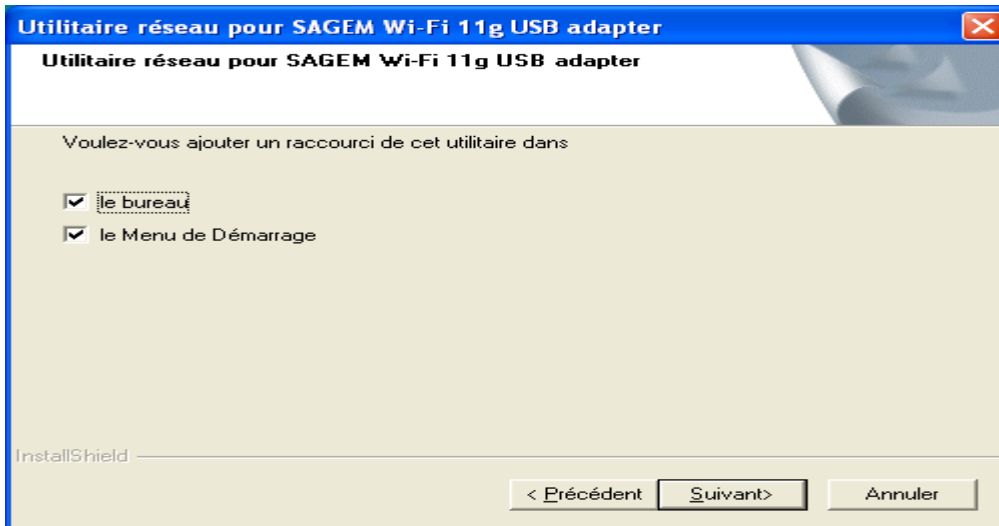
Click on SUIVANT (next)



Click on SUIVANT (next)



Click on SUIVANT (next)



Wait until the Installation has ended

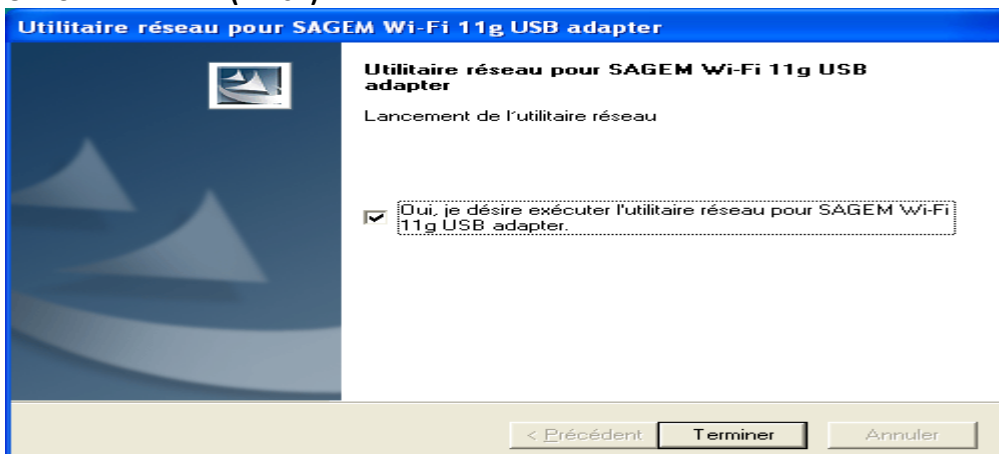


When you get this message, plug in your Wifi key into your computer and click on OK



Once the key is in, you will get the following message.

Click on TERMINER (Finish)

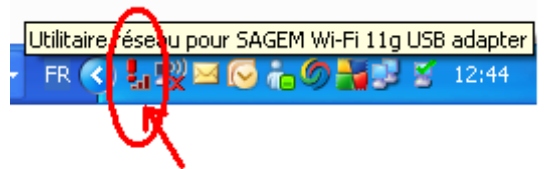


## STAGE 2 – Configure the Sagem XG-760N wifi key

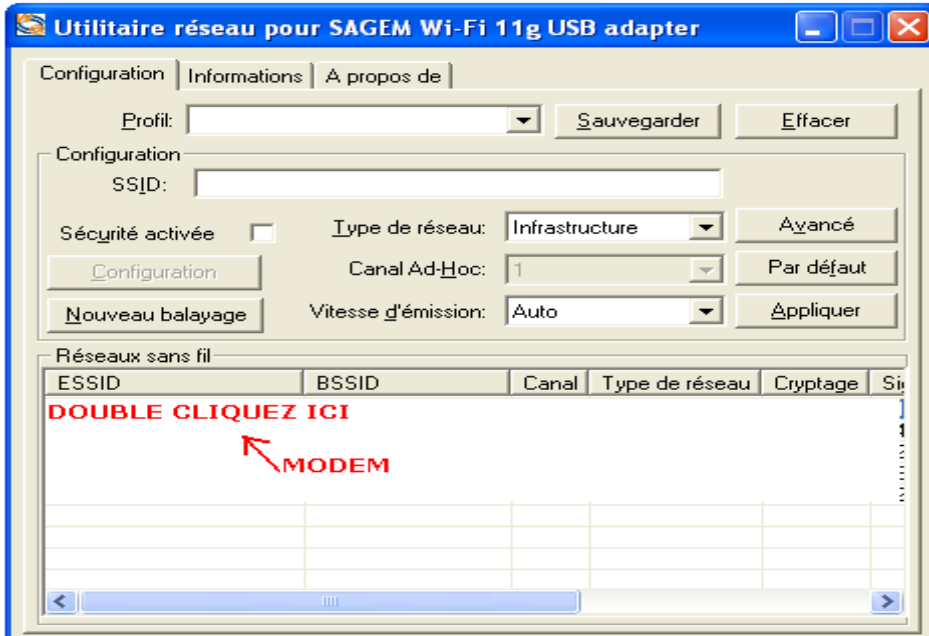
Double click on the following icon on your screen



(or on the red symbol)



Double click on the point concerning the modem



- Index de la clé = 1
- Longueur de la clé = 128 bits
- Write in the network **WEP** key (without any spaces) that you can find on the back of your modem
- Confirm it
- Then, click on **OK**

