

**VERY IMPORTANT: UPDATING INTERNET****Check your email to get your New login & your New Password**

Dear client,

Phonexpat is now in the process of optimizing its Internet network.

From today, Phonexpat is able to connect any line that is eligible to Broadband ADSL in France.

In order to guarantee the best Internet service, we ask our clients to update their modems.

This is the reason why, in a few days from now, your Internet access might be temporarily down.

**Do not wait for your internet to fall, do your modification as soon as possible.**

Nothing to worry about: you just have to follow the instructions to be able to reconnect.

This can take up to ten minutes, please be patient and follow the steps carefully.

**Print this document before beginning your update.**

We thank you very much for your understanding and confidence.

The whole team and technicians are available if you need any assistance.

Sincerely,  
Phonexpat.com

## If you don't use a Phonexpat modem

# IF YOU USE YOUR OWN MODEM

Please configure you modem with the information bellow

- 1- Connect your modem to the computer and turn it ON
- 2- Open your Internet EXPLORER (your browser) and type the **IP Address** of your Modem
- 3- Then you enter the login & the password of your modem
- 4- Your navigator show you the software of your modem
- 5- Now you have to configure the software with the information below:

A- VPI = **8**

B- VCI = **35**

C- PROTOCOLE ENCAPSULATION = **PPPOE LLC**

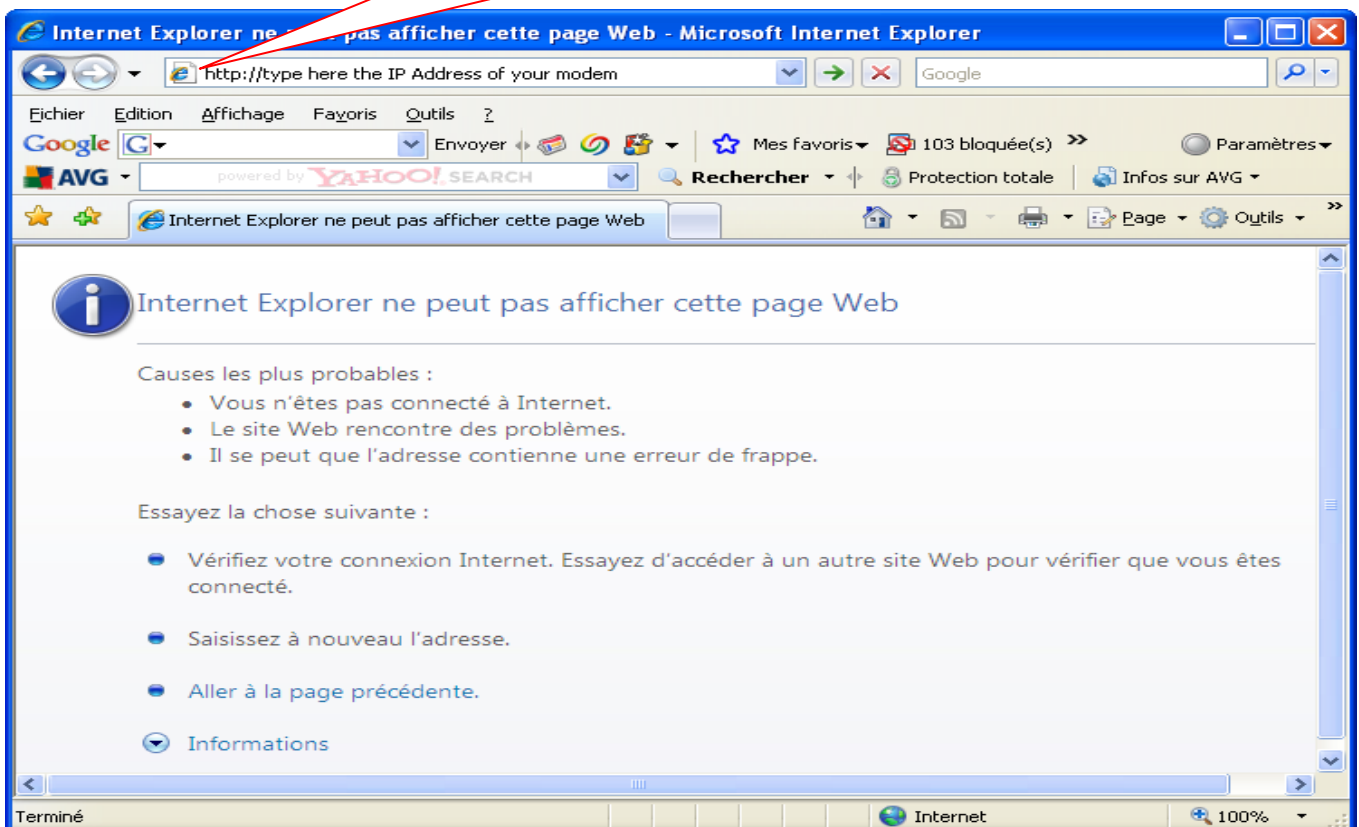
D- MODE or PROTOCOLE D'AUTHENTIFICATION = **CHAP**

E- Enter your **new LOGIN** and your **new PASSWORD** given to you by Phonexpat

F- Save and Reboot you modem and your computer.

**If you do not succeed in surfing, restart the PC and your modem and reattempt again.**

Type on your browser your modem IP address:  
**http://192. .... .**



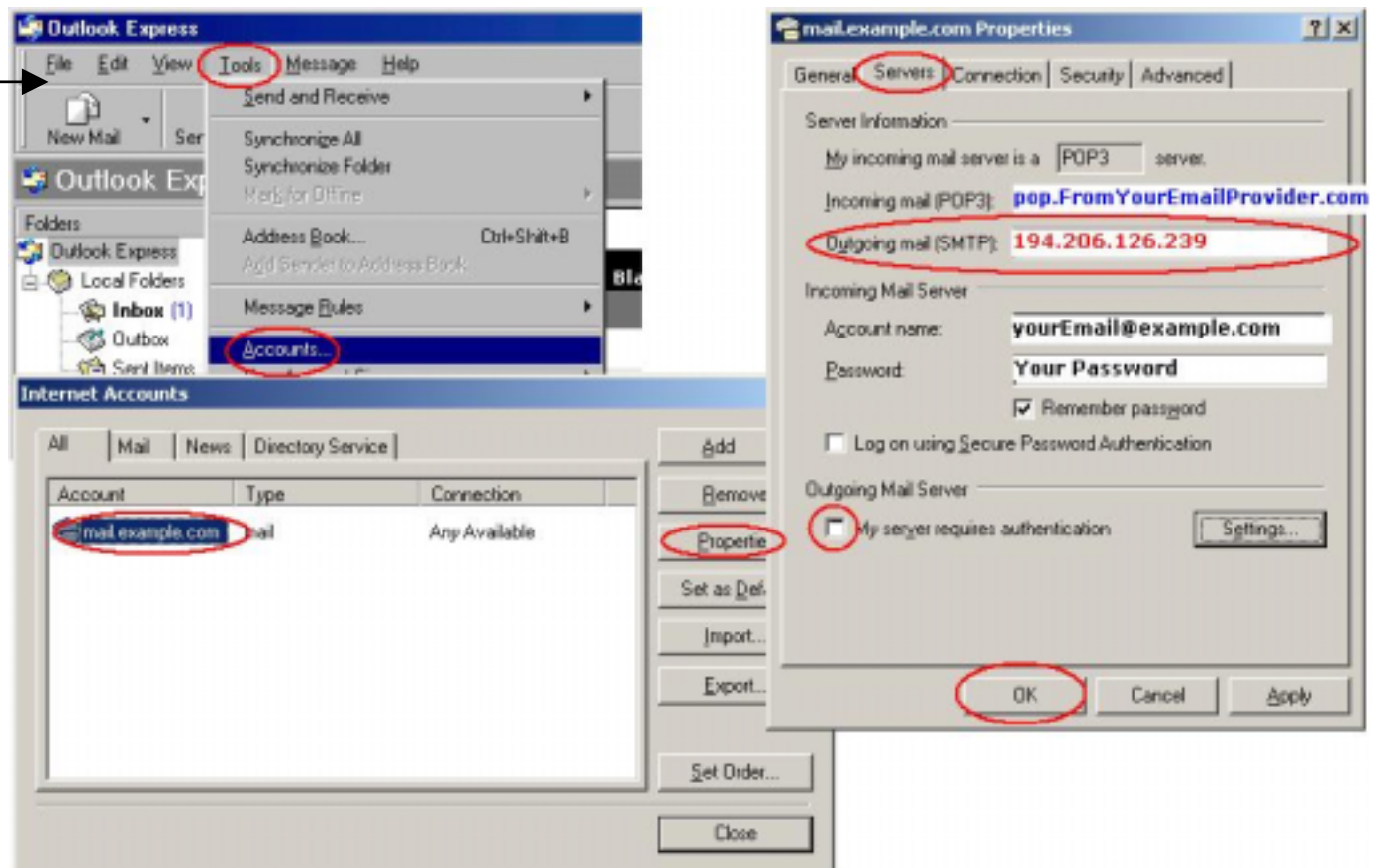
## Configuring your Outlook Express

- 1- Start Outlook Express, and on the **Tools** menu, click **Accounts**.
- 2- Click on your email account and then on Properties
- 3- Go to Servers: on **OUTGOING MAIL (SMTP)** type : **194.206.126.239**
- 4- Click **OK**

The POP3 is given it to you by your email provider.

**Do not click** on My server requires authentication.

Click OK



## Free E-mail Account

If you don't already have an email account, you can set up one for free, in an English environment, at one of the following high-quality services:

YAHOO! <http://www.yahoo.com> or <http://uk.yahoo.com>

HOTMAIL: <http://uk.msn.com/> (click on Hotmail)

GMAIL: <http://mail.google.com>